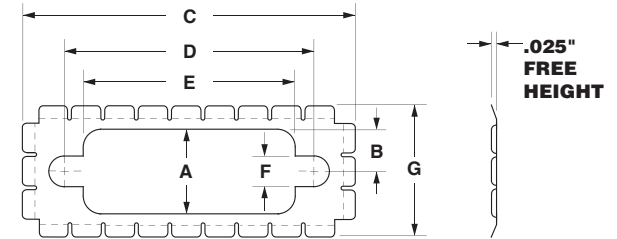


# FINISH CODES

# FILL IN SHADED AREAS TO COMPLETE THE PART DESCRIPTION

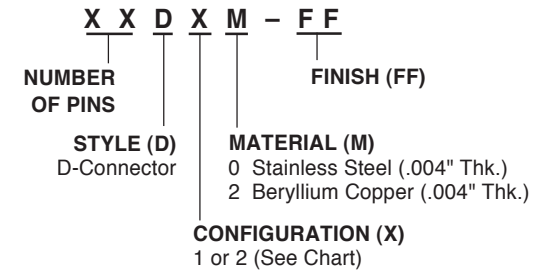
Choose the Gasket Material	
Stainless Steel	Beryllium Copper

Choose Gasket to Complete the Part Number								
Click Box Below	Gasket	A	B	C	D	E	F	G
	9 Pin - Config. 1	.44	.22	1.41	.98	.78	.16	.69
	9 Pin - Config. 2	.35	.18	1.41	.98	.78	.16	.69
	15 Pin - Config. 1	.44	.22	1.74	1.31	1.11	.16	.69
	15 Pin - Config. 2	.35	.18	1.74	1.31	1.11	.16	.69
	25 Pin - Config. 1	.44	.22	2.28	1.85	1.65	.16	.69
	25 Pin - Config. 2	.35	.18	2.28	1.85	1.65	.16	.69
	37 Pin - Config. 1	.44	.22	2.93	2.50	2.29	.16	.69
	37 Pin - Config. 2	.35	.18	2.93	2.50	2.29	.16	.69
	50 Pin - Config. 1	.55	.28	2.84	2.41	2.20	.16	.80
	50 Pin - Config. 2	.45	.23	2.84	2.41	2.20	.16	.80



### Metal D-Connector Gaskets

Example: Part number 25D12-02 is a 25-pin D-Connector Gasket made from Beryllium Copper with a clean and bright finish.



### TECH-ETCH MANUFACTURING PART NUMBER

D	-	
(FINISH)		

#### NOTES:

- MATERIAL BeCu, C17200 HARDENED OR 301 STAINLESS STEEL.
- FINISH: AS SPECIFIED - SEE TOP LEFT.
- UNLESS OTHERWISE SPECIFIED DIMENSIONS ARE IN INCHES.

UNLESS OTHERWISE SPECIFIED ALL TOLERANCES TO BE:

- .XX ±.02
- .XXX ±.005
- .X ±.005/in.

# Tech-Etch

45 Aldrin Road, Plymouth, MA 02360  
 TEL 508-747-0300 • FAX 508-746-9639  
 sales@tech-etch.com • www.tech-etch.com

SCALE:  
100% for 25D1M

CATALOG NUMBER:  
D -

DATE:  
10-7-05

PART NAME:  
D Connector Gasket

CUSTOMER PART NUMBER: